

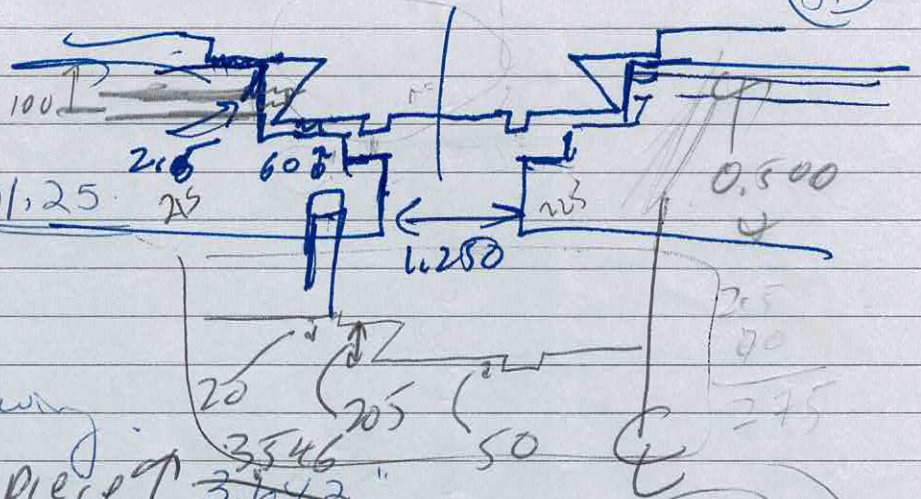
# Kleinfield Lab

DATE:

TOPIC: 7/7/98

(81)

MRC 600 top knob @ 1.25



380 shown

Eye piece

2.288

~~5.096~~

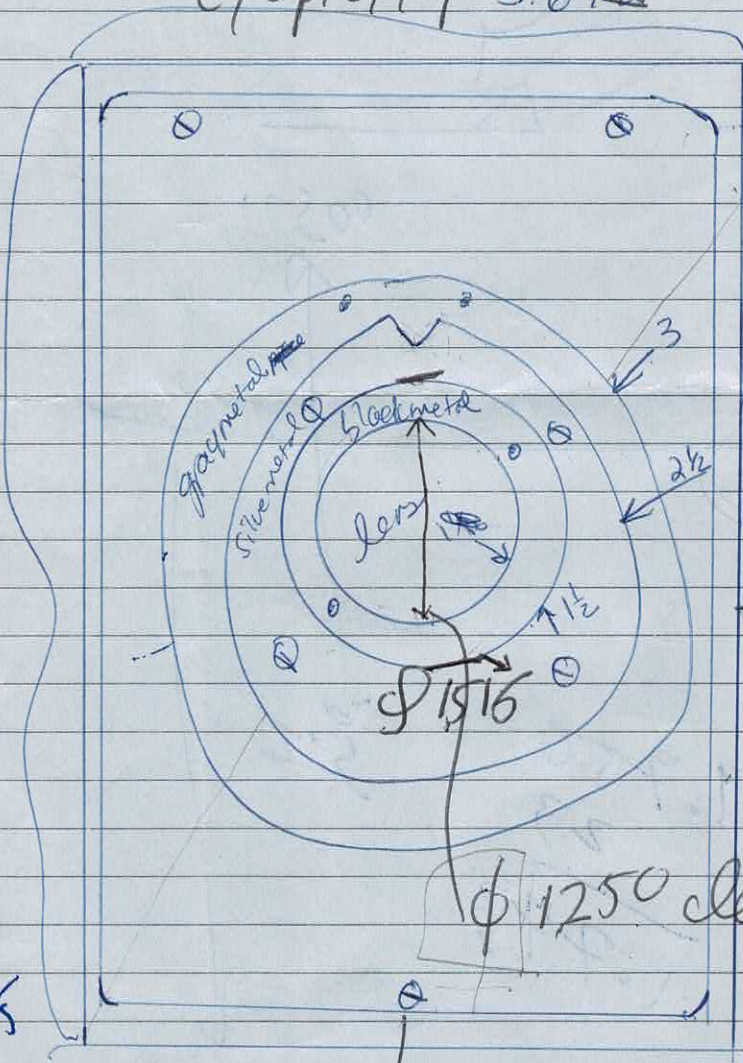
5.003

236

275

5  
10.288

5/4 625



5.003  
- 2.715

2.288

0.250 deep  
rad

In front of 2-position slide

φ 2.258  
Slange  
015

2.715

1.516  
2.258

190

2620

95

2.715

W600

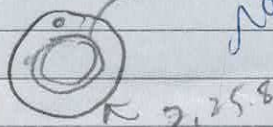
8.000

- 2.715

5.285

8.000  
1.516

lock/pin



83

DATE: \_\_\_\_\_

TOPIC: \_\_\_\_\_

